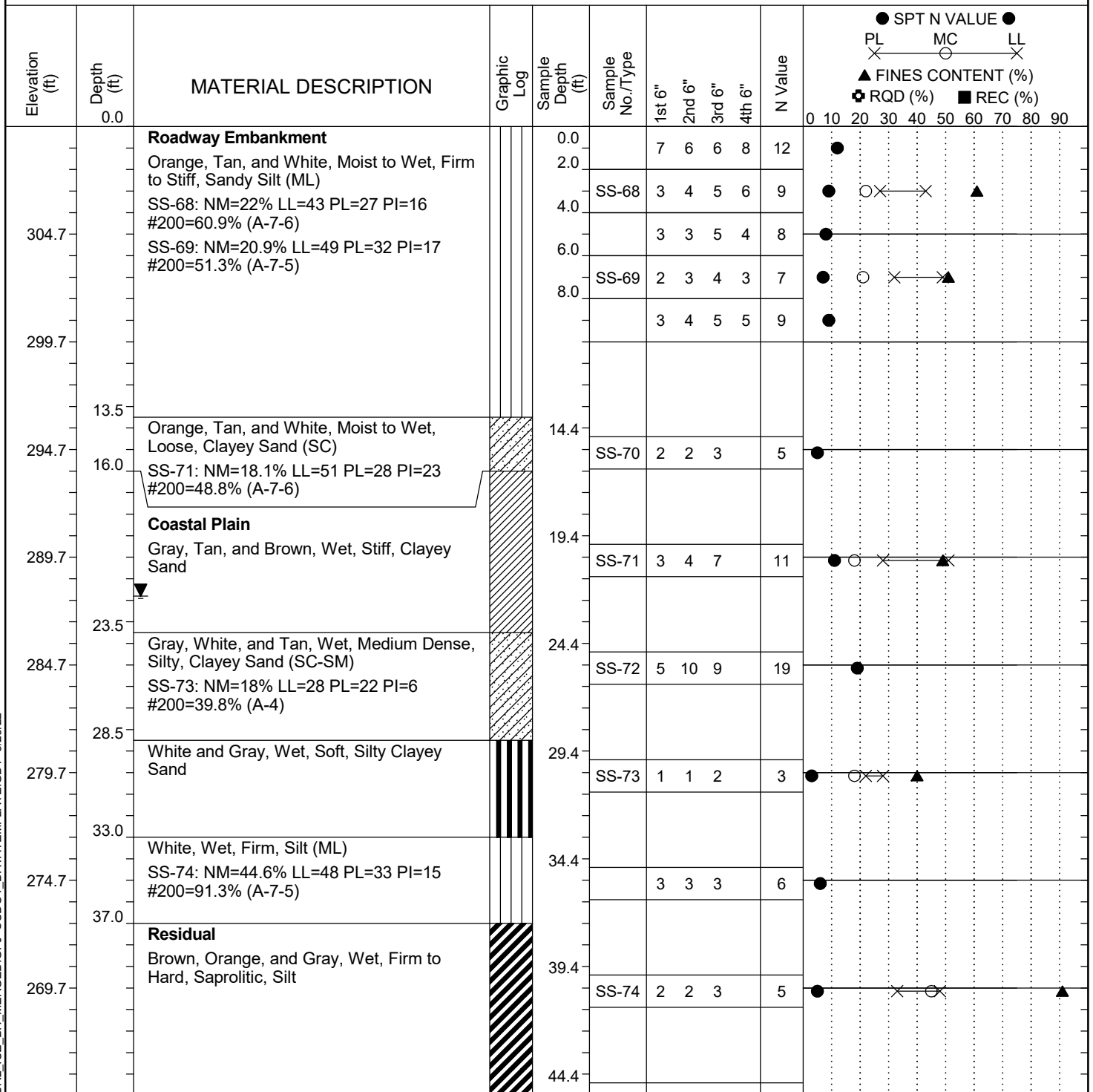


Project ID: P039719				County: Richland		Boring No.: G-112		
Site Description:		Carolina Crossroads Phase 2					Route:	Ramp
Eng./Geo.: C. McIlroy		Boring Location: 397+03			Offset:	24 LT	Alignment:	RAMPF
Elev.: 309.7 ft	Latitude:	34.039457	Longitude:		-81.09576062	Date Started:		5/4/2022
Total Depth:	70.3 ft	Soil Depth:	70.3 ft	Core Depth:	N/A ft	Date Completed:		5/4/2022
Bore Hole Diameter (in):		2.25	Sampler Configuration		Liner Required:	Y (N)	Liner Used:	Y (N)
Drill Machine:	D-50 #439	Drill Method:	RW	Hammer Type:		Automatic	Energy Ratio:	90.8%
Core Size:	N/A	Driller:	R. Cassell	Groundwater:	TOB	N/A	24HR	21.8 ft



LEGEND

Continued Next Page

SC\_DOT 20-01\_CCR2\_ICE\_BH\_MERGED.GPJ SCDOT\_DATATEMPLATE.GDT 5/23/22

<b>SAMPLER TYPE</b>				<b>DRILLING METHOD</b>			
SS - Split Spoon	NQ - Rock Core, 1-7/8"	HSA - Hollow Stem Auger	RW - Rotary Wash	CFA - Continuous Flight Augers	RC - Rock Core	DC - Driving Casing	
UD - Undisturbed Sample	CU - Cuttings						
AWG - Rock Core, 1-1/8"	CT - Continuous Tube						